



# SRM CONSTRUCTION AND CONTRACTING PVT.LTD.

SRM CONSTRUCTION | SRM EARTH MOVERS | SRM TRANSPORT

MASTERS OF CONSISTENCY AND QUALITY





SRM has been managing the Design & Engineering, Construction, Earth Moving, Security System, Fire & Safety, Utilities & Infra industry in Asia. We design, innovate, create and enhance and do best.

SRMs carry out small renovations to complex projects.

From modular construction of advanced digital technologies and advanced durability, SRM has what you need



The SRM Group has a diligent and dynamic team of employees and workers with inter-sectoral and international experience.

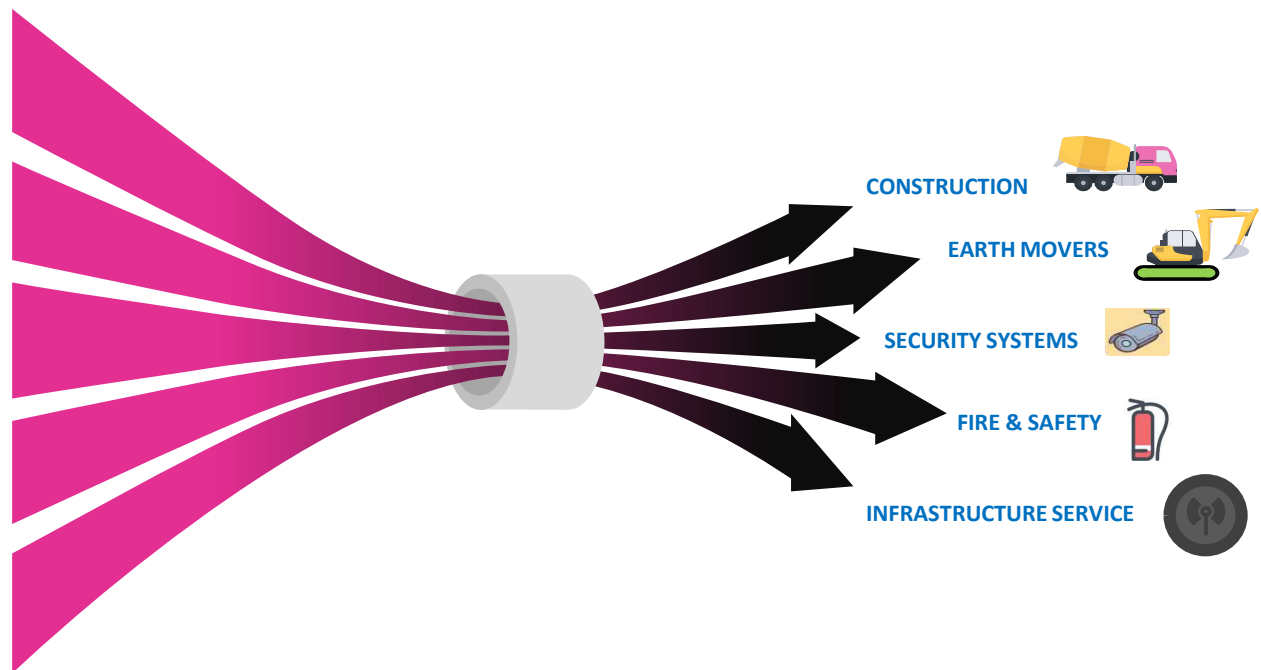
SRM Construction has advanced technology capabilities in project development, design, engineering, procurement, construction, commissioning, operation and maintenance of basic infrastructure projects. The SRM Group has a diligent and dynamic team of employees and workers with inter-sectoral and international experience.





## ABOUT AS

- SRM redefines the full service, providing expertise to all types of projects, on all scales, and on all procurement models. As suppliers of innovative solutions and construction professionals, we use our expertise to customize the right approach for your project, maximizing value at the best price.
- SRM is proud to announce that all accomplishments have been achieved through ongoing efforts, innovative methods and, most importantly, safety and quality as a hallmark of operations.
- SRM Construction has advanced technology capabilities in project development, design, engineering, procurement, construction, commissioning, operation and maintenance of basic infrastructure projects. Flexible, targeted and innovative: Our focus is on achieving your project vision and business objectives.



- As a market leader and pioneer in the main infrastructure disciplines, SRM Construction & Contracting has a diligent and dynamic team of staff and labour with cross-sectoral and international experience. SRM Construction has advanced end-to-end technology capabilities in project development, design, engineering, procurement, construction, commissioning, operation and maintenance of basic infrastructure projects.
- Over the past decades, SRM Construction has built a solid reputation based on expertise and experience. SRM Construction is proud to proclaim that all accomplishments were through continuous efforts, innovative methods, and above all, Safety and Quality as the hallmark of operations. SRM Engineering & Construction considers each project to be a new challenge, an innovative field for achieving excellence customer expectations.
- SRM Construction is the flagship Company of SRM Group of Companies and was incorporated and registered under the laws of the Republic of India in 2022. We are a progressive, multi-disciplined conglomerate having Functional Operations in the GCC region and India.
- SRM India as a group, focuses on construction, engineering, fire & safety, ELV, telecommunications, utilities, infrastructure and industrial projects.



## SRM MANAGEMENT FUNCTIONAL FLOW CHART

CHAIRMAN



MANAGING DIRECTOR



GENERAL MANAGER



COO



CFO



CONSTRUCTION  
MANAGER



EARTH MOVERS  
MANAGER



ELV-SECURITY  
SYSTEM  
MANAGER



INFRASTRUCTURE  
MANAGER



FIRE & SAFETY  
MANAGER







## OUR COMMITMENTS





## MILESTONE OF SRM GROUP

Year Of  
Commencement

1970

Investing Into The Growth Of  
Industrial Economy

1980-2000

Giving In Large  
Sustain Projects

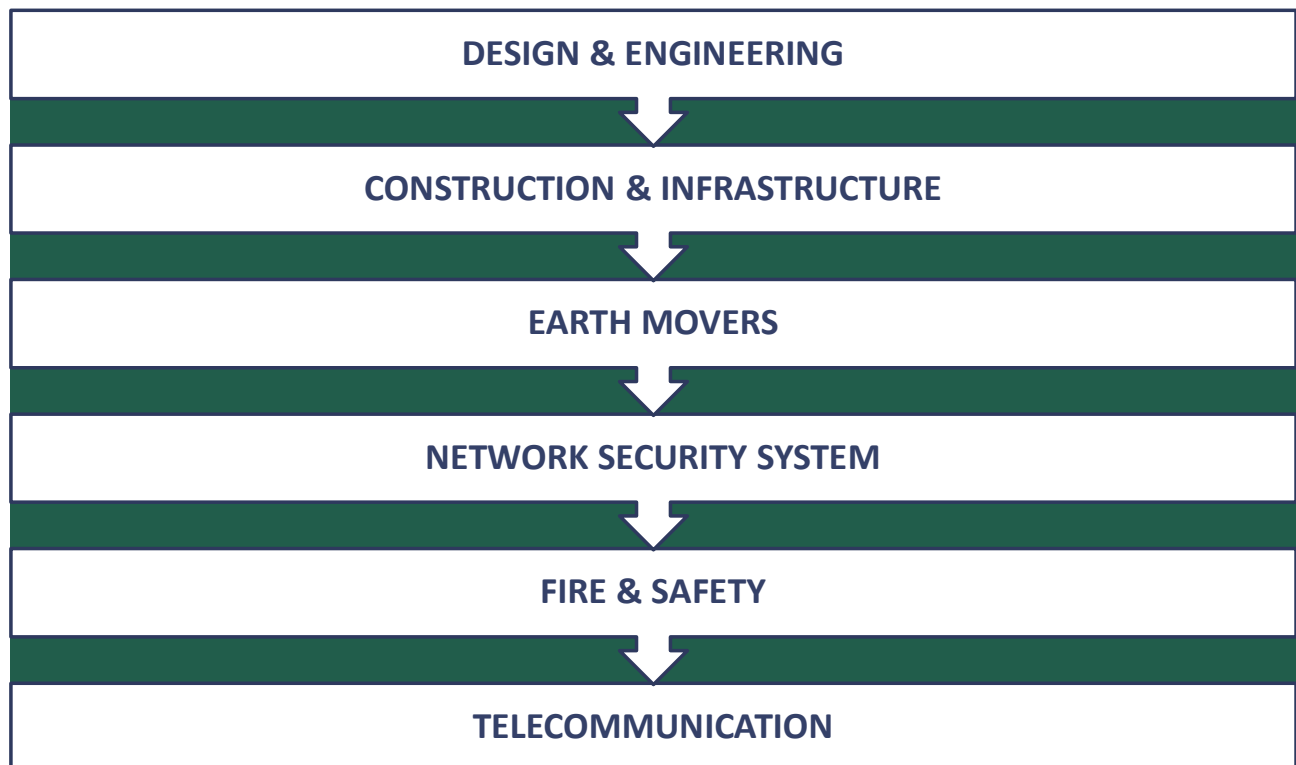
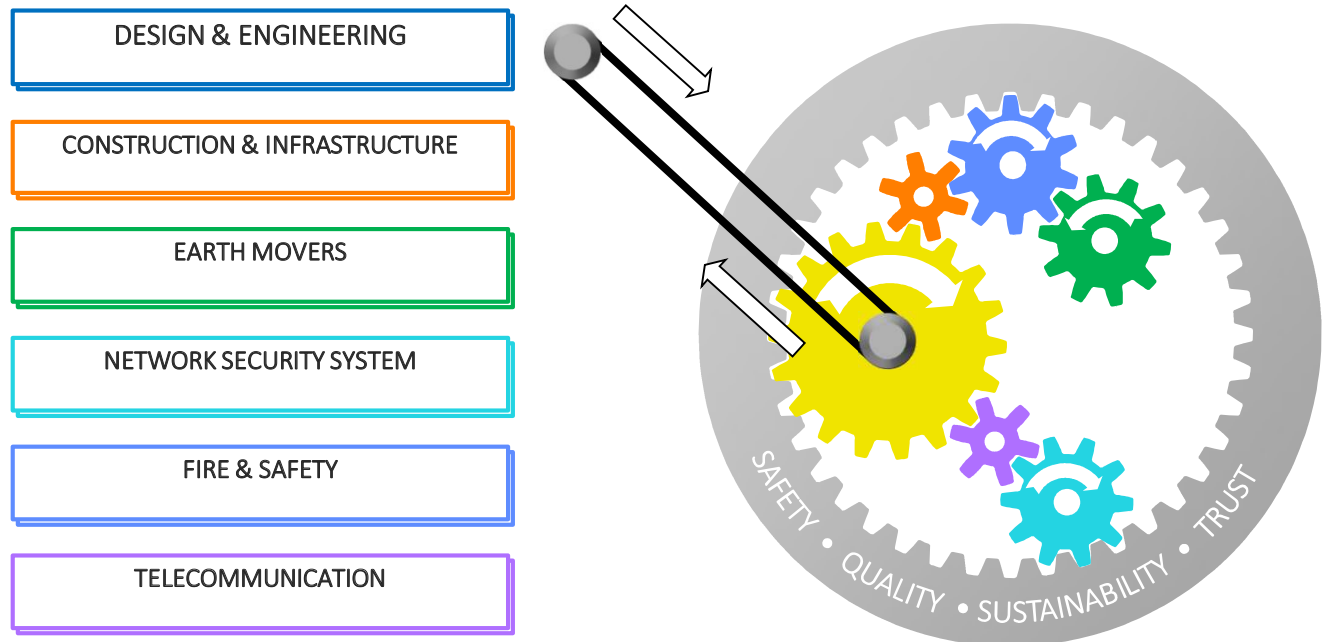
2010-2022

Regional Records And  
Progress To Be The Leading  
Group In The Region  
Redefining Service  
Excellence

SINCE 2023



## SRM-CLUSTERS OF SERVICE







## SRM-JOURNEY OF WORK COMMENCEMENT

**1970**

Started as Earth Moving Company with the trust of clients.

**1970**

**2010**

Success in the field of safety systems and infrastructure

**2010**

**2030**

Being the leading group in the area of infrastructure and utilities

**2030**

**2000**

Establishment of the organization in ELV & Transport with contribution

**2000**

**2023**

Supporting and build the Construction & Utilities commercial opportunity.

**2022**



## OUR SERVICES

### ENGINEERING

- Planning Design & Estimation
- Structural engineering
- Construction engineering and management
- Geotechnical engineering
- Environmental engineering
- Water resources engineering
- Materials engineering

### CONSTRUCTION

- Building Construction
- Interiors
- Civil Infrastructure & Utilities
- Retaining Structure

### INFRASTRUCTRE

- Domestic Water Network
- Irrigation Water Management System
- Sewage Pipe Line System
- Drainage Pipe Line System
- High Pressure Piping System
- Reservoirs & Spillway System

### EARTH MOVING

- Digging Equipment
- Mass Excavation Equipment
- Engineering Equipment
- Trucks & Heavy Machines
- Hydraulic Machines

### SECURITY SYSTEMS

- CCTV Video Surveillance System
- Access Control & Identify Management System
- Parking Management System
- SMATV / IPTV Systems
- Audio Visual System
- PA/BGM Systems
- Network Infrastructure System

### FIRE & SAFETY

- Fire Alarm System
- Emergency Lighting System
- Sprinkler System
- Fire Fighting Pumps
- Portable Fire Extinguisher
- Fire Hose Reels
- Fire Hydrants System

### TELECOMMUNICATION

- Telephone System
- Fiber Optics
- Telecom Equipment
- VHF/UHF/HF Radio Systems



## **EARTH MOVERS & TRANSPORT**

- Earth moving equipment can include equipment like heavy machines, heavy trucks, construction equipment, heavy vehicles, engineering equipment, and heavy hydraulics
- The company's policy of construction plant and equipment management and operation is one of preventive maintenance, where before allocation of equipment, it is inspected by SRM's maintenance department to ensure suitability for use and compliant performance.
- The operational availability and condition of construction plant and equipment is controlled and monitored by an SRM plant system that is recognized and certified under ISO 9001.
- SRM takes into account past performance and local backup services and has high quality equipment benchmarking that is found to be best suited for core operations.



- Nevertheless, other types of equipment are occasionally used to evaluate performance and compare with standardized equivalent naval units.
- Accordingly, the construction plant and equipment are operated with high availability by ensuring our personnel are familiar with the equipment and availability of essential spare parts.
- During mobilization for a project, all aspects of construction plant and equipment requirements, including workshop and maintenance facilities, stores, stocks, procedures, parts library and service manuals, consumables, workshop and maintenance personnel, and maintenance are planned by the operations department.





## EARTH MOVERS & TRANSPORT

- SRM has the largest fleet of cranes and other specialized equipment for complete lifting solutions, from traditional to the most innovative alternative lifting methods. All our specialist equipment is available for hire with or without operator for long term requirements and short term requirements.
- We take care of everything from maintenance to security needs, so you can run your project efficiently. With state-of-the-art equipment and highly skilled and trained personnel, SRM strives to ensure that every lift is installed safely with utmost perfection. We aim to save you time by understanding all your requirements and recommend the most efficient and economical solution to ensure your project needs are met.



- We serve mainly for loading materials into trucks, laying pipe, clearing rubble, and digging
- Backhoe loader combines two popular functionalities of heavy equipment — digging and moving
- On one side is a loader bucket for pushing, lifting and carrying materials, and on the other side is a backhoe for easy digging





## ENGINEERING

- Our pre-construction professionals draw on best practices and learned knowledge to maximize design and construction capabilities, as well as continuous value engineering to deliver best value at the lowest cost without compromising your design vision.
- Increasing design and construction capabilities adds measurable value and reduces risk
  - I. Planning Design & Estimation
  - II. Structural engineering
  - III. Construction engineering and management
  - IV. Geotechnical engineering
  - V. Environmental engineering
  - VI. Water resources engineering
  - VII. Materials engineering





## CONSTRUCTION

- We specialize in delivering large complex building, retaining structure projects utilizing in house expertise and our skilled workforce. Driven by SRM's largest resource of personnel, plant and equipment and a network of global offices, it offers a full range of back-up support services.
- When engaged early, our solution providers and advanced technology will increase your bottom line value
- With a focus on reducing costs, virtual engineering is a unique opportunity to engage our experts in innovative thinking and creative problem solving
- An ideal solution may be cost neutral with potential savings over the lifetime of the facility or overall construction time. We can model alternative solutions with a quick cost analysis of different design options

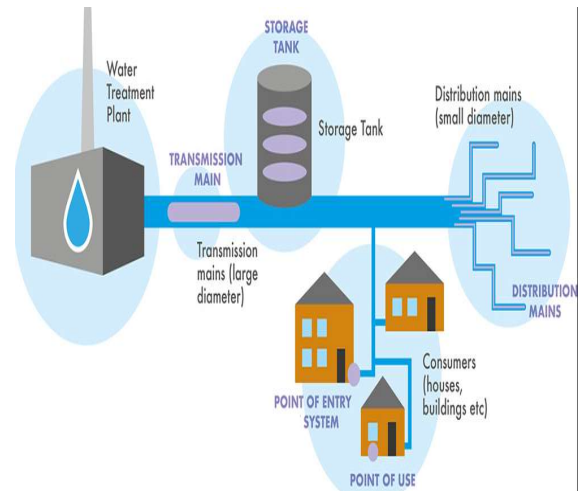






## INFRASTRUCTURE - WATER MANAGEMENT SYSTEM

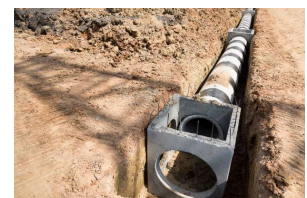
- With rapid urbanization, the demand for drinking water and sewage services also increases.
- SRM has the infrastructure, experience and expertise to install the required pipelines, water pumping stations and complete sewage networks.
- Various materials installations using materials including uPVC, HDPE, GRP, GRE, Concrete, Steel and Ductile Iron



- Transmission & Distribution Networks Installation of potable water and irrigation networks, sewage, drainage, and fire fighting.
- Services include installation, pipe laying, testing and commissioning of complete networks in commercial, industrial and domestic buildings.

### SRM has successfully designed Water and Wastewater Transmission Projects for

- Cross Country Pipelines (CS, DI, GRP, Concrete, HDPE)
- Water Transmission Pipelines (CS, DI, GRP, Concrete, HDPE)
- Water Distribution Networks (CS, DI, GRP, Concrete, HDPE)
- Sewage Pressure Mains Pipeline (CS, GRP, HDPE)
- Sewerage Distribution Networks (HDPE, GRP, VC, uPVC, and Stoneware)
- High-Pressure Pumping Stations
- RCC Reservoirs





## ELV-SECURITY SYSTEM

- Customized, comprehensive solutions provide integration of operational security management with security technologies.
- SRM has the ability to design a complete security solution to meet both your needs and your budget.
- From the tender stage, master plan and management plan, a detailed security design can be developed to suit the project.



- We examine the site, type of building, nature of users and other variables to determine your needs to ensure your day-to-day operations run smoothly and ensure business continuity.
- The division prides itself in designing seamlessly integrated security management solutions for world-class projects
- The integrated solution goes beyond traditional security systems and integrates various systems, including network management systems, into one seamlessly integrated security management console.



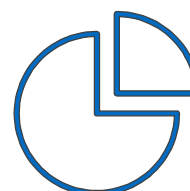
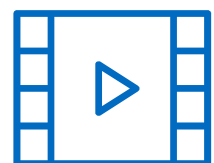
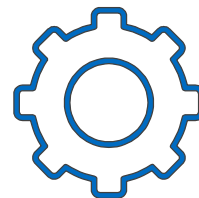
## ELV-SECURITY SYSTEM

- Our approach to creating a preliminary security design will understand the situation and design and implement the most appropriate solution using the best technology, project management and execution to achieve measurable results on time and on budget



### We can offer solutions for

- Automatic Number Plate Recognition System.
- CCTV Video Surveillance System
- Access Control & Identity Management Systems
- Intercom Systems & Alarm Systems
- Parking Management Systems
- Network Infrastructure
- Street Lighting Monitoring and Control Systems
- Integrated Security Solutions
- PA/BGM Systems
- Audio Visual Systems
- SMATV /IPTV Systems







## ELV-Security System

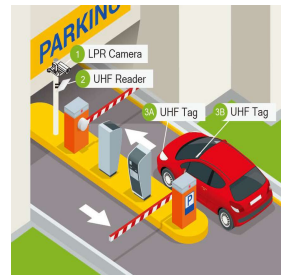
CCTV Video Surveillance System



Access Control & Identity Management Systems



Parking Management Systems



SMATV /IPTV Systems



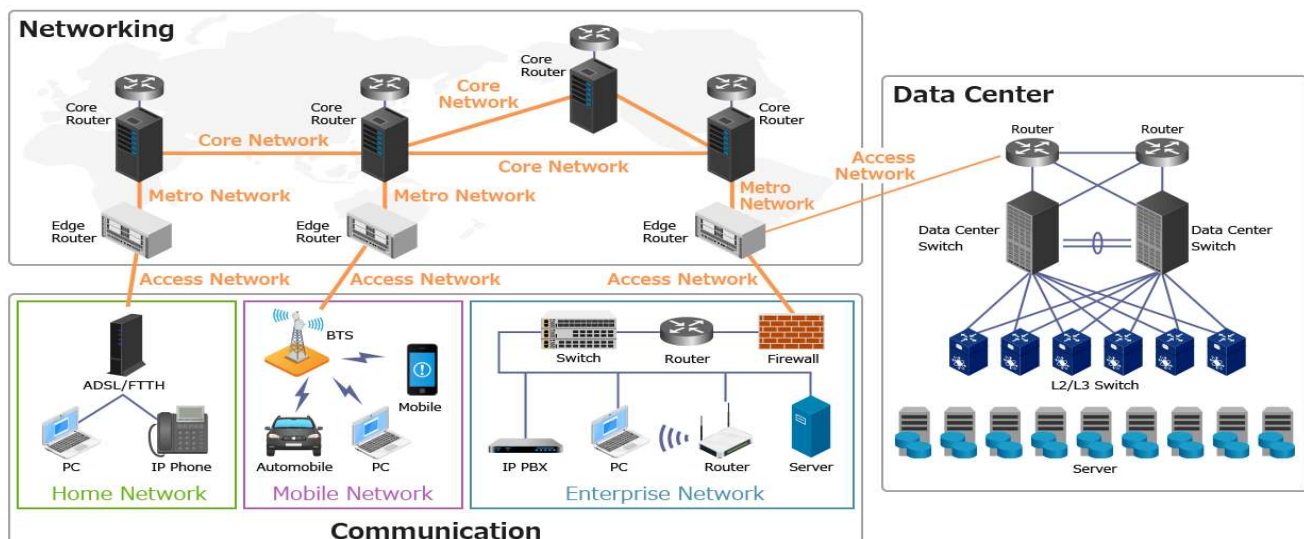
Audio Visual Systems



PA/BGM Systems



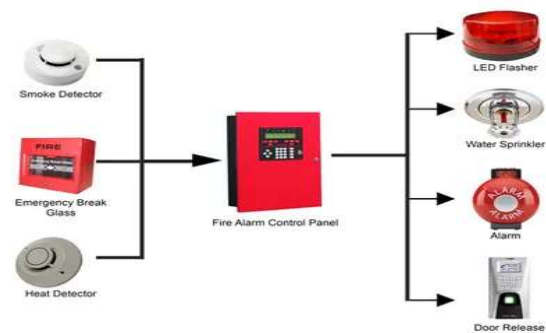
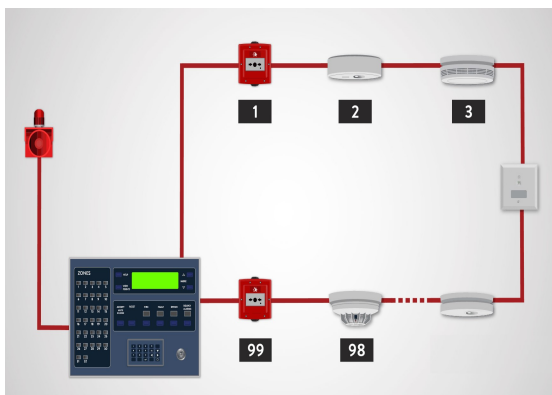
Network Infrastructure Systems





## FIRE & SAFETY

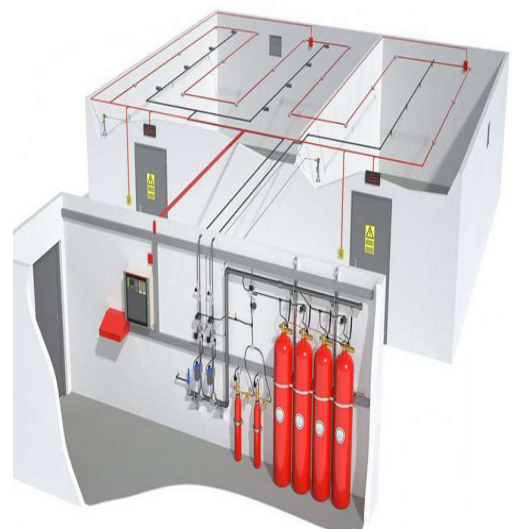
- We are an ISO certified company offering comprehensive and in-depth services in design, supply, installation, testing, commissioning and maintenance of full range of firefighting systems
- Our products and services range from fire alarm and detection systems, fire pumps, fire sprinklers, emergency evacuation systems and fire protection coatings
- SRM safety and security designers stay with each project from start to finish. We manage and coordinate firefighting services, manpower, supplies and schedules
- Designers handle contract documents, design and hydraulic calculations, as well as stay abreast of code and insurance compliance.



- We provide our personnel with the latest design software and state-of-the-art, fixed and portable hardware to allow on-site design of firefighting services.
- SRM Safety and Security is a certified fire systems organization that maintains a complete library of state, city, military and insurance codes and standards.

### We can offer solutions for

- Fire Alarm System
- Emergency / exit lights
- Sprinkler systems
- Fire fighting pumps
- Portable fire extinguishers
- Fire hose reels
- Deluge systems
- Fire hydrants system



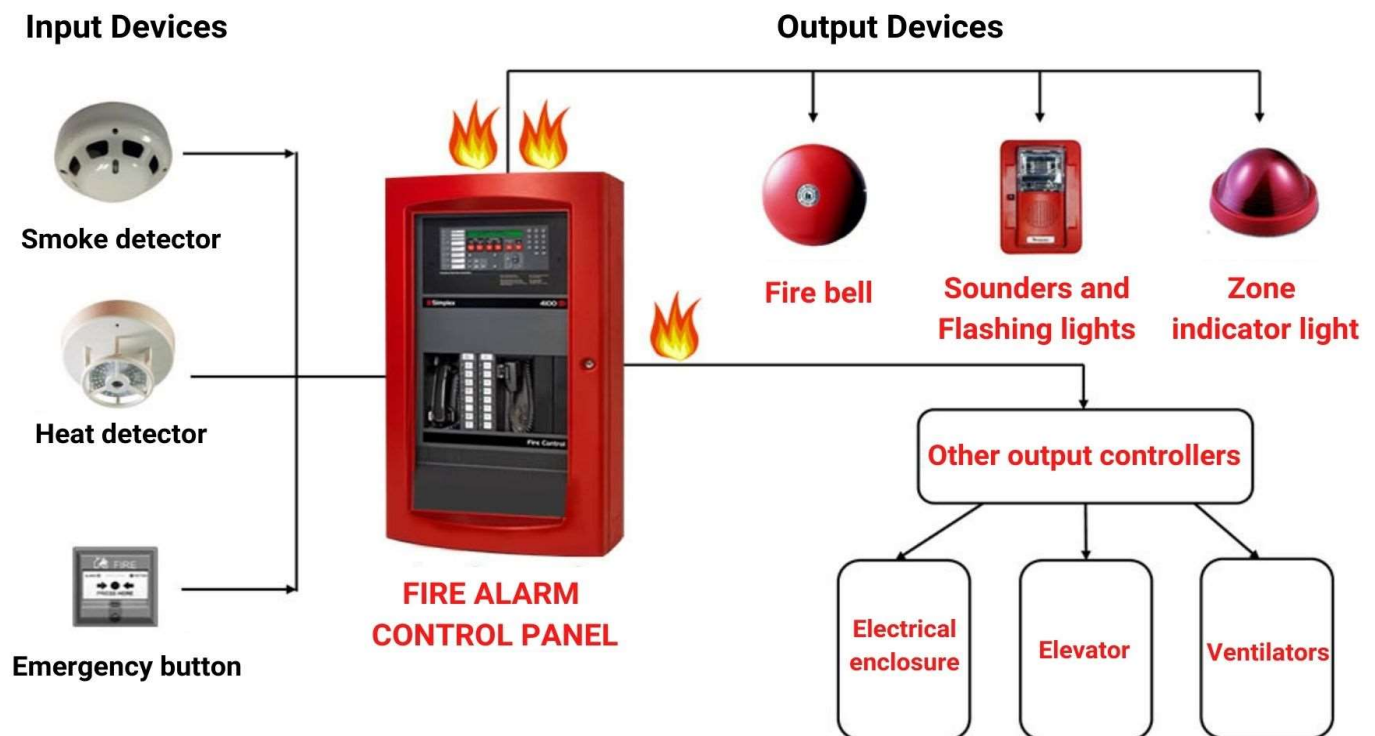


## FIRE & SAFETY

### FIRE ALARM SYSTEM

- Fire alarm systems provide early detection in the event of a fire to evacuate the building and alert the fire department. An automatic fire alarm system is designed to detect the unwanted presence of fire by monitoring environmental changes associated with combustion.
- Generally, a fire alarm system is classified as automatically activated fire alarm systems, manually activated fire alarm systems, or both.
- Automatic fire alarm systems can be used to evacuate people in the event of a fire or other emergency, summon emergency services, and prepare structures and related systems to control the spread of fire and smoke.

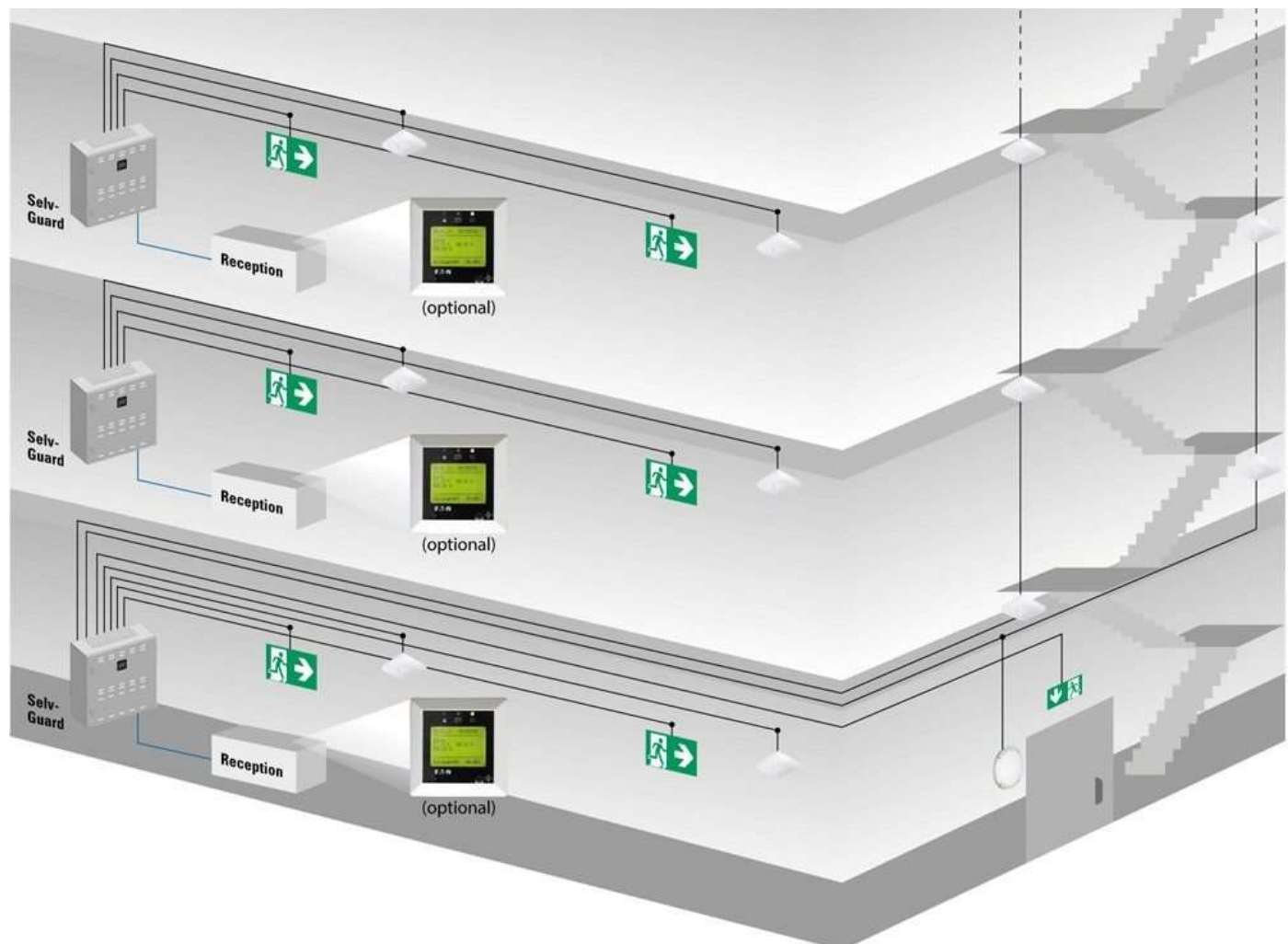
### CONVENTIONAL FIRE ALARM





## EMERGENCY LIGHTING SYSTEM

- Emergency lighting enables you to safely stop work and evacuate the building in the event of an emergency by following the exit lights.
- Emergency lighting is a complete backup system that does not rely on the operation of the general power supply system in the building.
- An important element of the requirements for emergency lighting is when the supply of all or part of the normal lighting in the occupied premises fails.

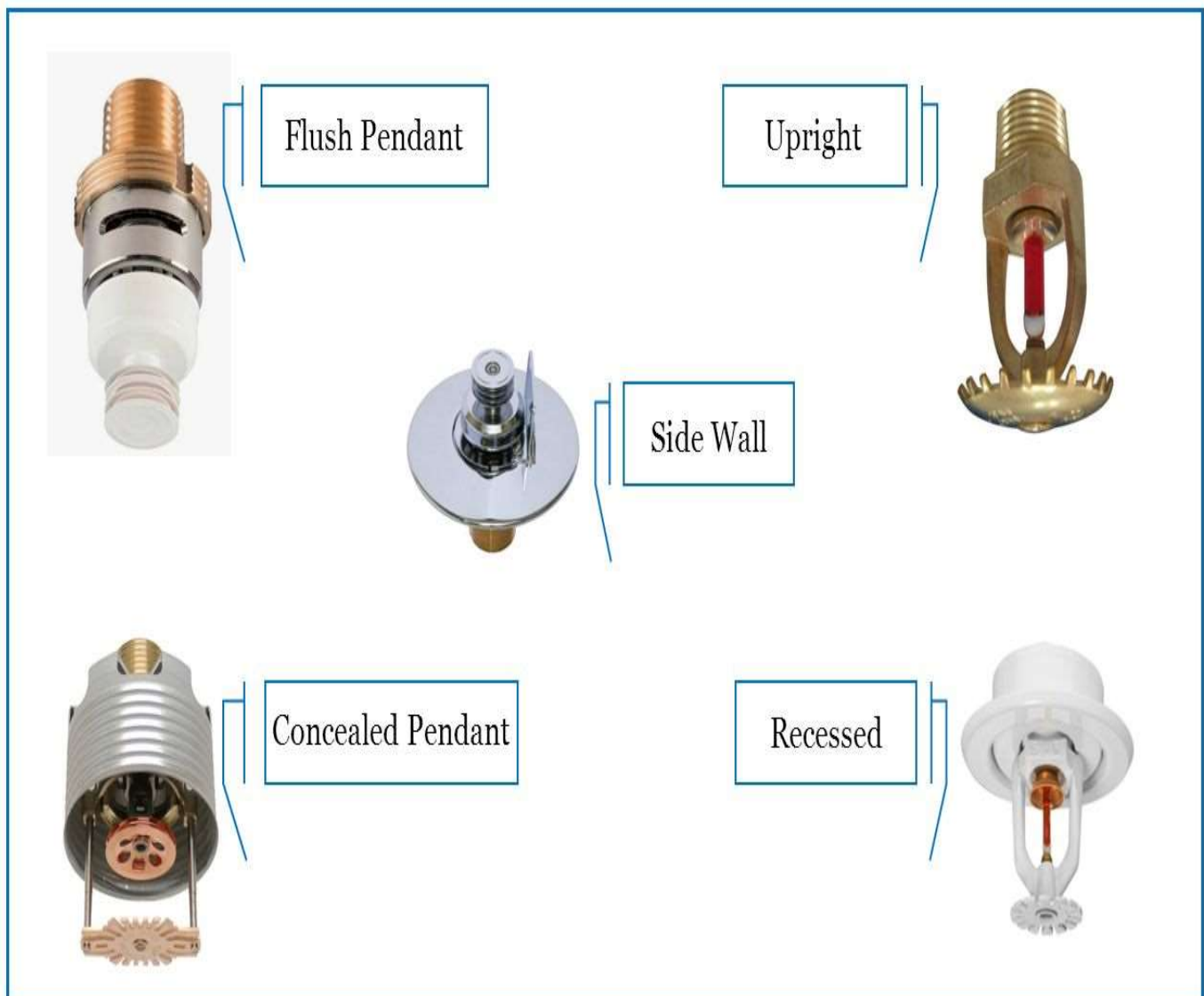






## SPRINKLER SYSTEM

- A fire sprinkler system is an active fire protection measure that consists of a water supply system that provides adequate pressure and flow rate to a water supply piping system to which the fire sprinklers are attached.
- Although historically only used in factories and large commercial buildings, home and small building systems are now available at cost-effective prices.

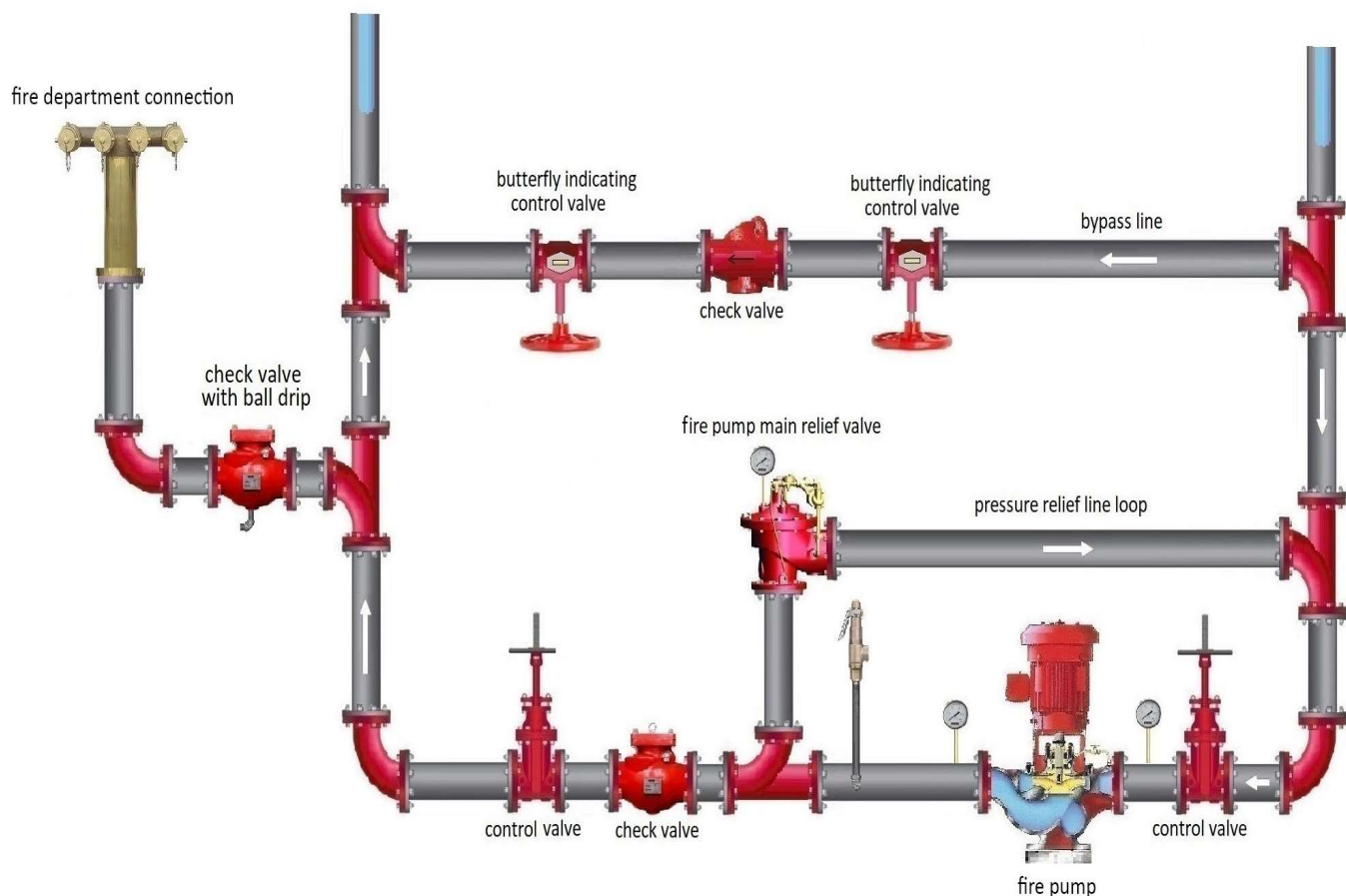




## FIRE FIGHTING PUMPS

- A fire pump is part of the water supply of a fire sprinkler system and can be electric or diesel powered.
- The fire pump intake is connected to a public ground water supply pipe or fixed water source (eg, tank, reservoir, lake).
- A fire pump sprinkler system provides high pressure water flow to risers and hose standpipes. A fire pump is tested and listed for fire service by a third-party testing and listing agency such as UL or FM Global.

### Fire Pump System





## PORTABLE FIRE EXTINGUISHERS

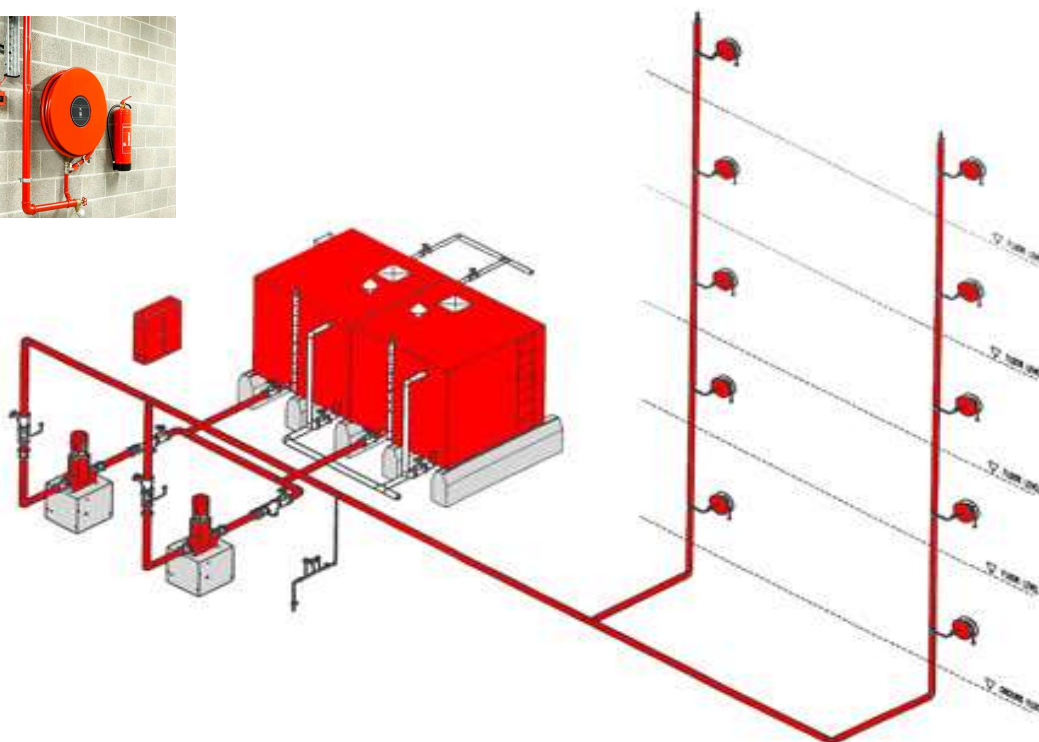
- A critical component of any life safety strategy, fire extinguishers can contain fires before they get out of hand
- We offer testing and inspection of all types of fire extinguishers and wheel units
- A fire extinguisher is an active fire protection device used to extinguish or control small fires, often in emergency situations.





## FIRE HOSE REELS

- Fire hose reels are located to provide a reasonably accessible and controlled supply of water to combat a potential fire hazard
- A fully extended fire hose length of 19mm (outer diameter) is 36 meters in diameter
- These appliances are designed to deliver a minimum of 0.33L of water per second. A control nozzle attached to the end of the hose enables the operator to control the direction and flow of water to the fire
- All fire hose reels come with a unique ball valve shut-off device, a plastic or solid brass hose reel end, and a mounting bracket.







## FIRE HYDRANTS SYSTEM

- A fire hydrant system is a safety measure or emergency equipment required in buildings that consists of a series of components that, when assembled, provide a source of water to help extinguish a fire
- A fire hydrant / stand pipe system is a visible connection point placed at defined locations for firefighters to tap into the water supply
- All buildings, parking lots, roadsides, tunnels, industrial areas etc. should have fire hydrants / standpipe system connected to water service network
- They are designed to immediately provide firefighters with the water they need to fight and extinguish fires





## TELECOMMUNICATION

- SRM Telecom Department has established itself in a strong position of market leadership with a reputation for technical excellence and uncompromising product quality, having telecom projects
- SRM Telecom Department is a leading provider of specialized engineering and installation expertise for telecommunications projects all over the India
- We offering integrated business and technology solutions to the Telecom operators / regulators, Government entities & Corporates in partnership with Global Technology Industry leaders
- The company activities cover a large part of the communications industry spectrum and includes the Sales and Service of Telecom equipment and Projects based on Microwave Systems, PDH/SDH on Optic Fiber , VHF/UHF/HF radio systems, telephone systems





## TELECOMMUNICATION

The Company's skilled and experienced Manpower deliver, design, engineer, Install, test & commission the Radio, Telephone, microwave, solar system, Outside Plant (copper & fiber) networks for various agencies in the country including The Telecom service Providers

### Solutions at a Glance

- Corporate and academic wide area networks
- Police and fire communications systems
- Campus network
- Products for Small & Medium Business

Telephony solutions for Hotels and Large Enterprises

- Hospitality Applications Voice mail & Call Accounting Service





## MARKETING PLAN

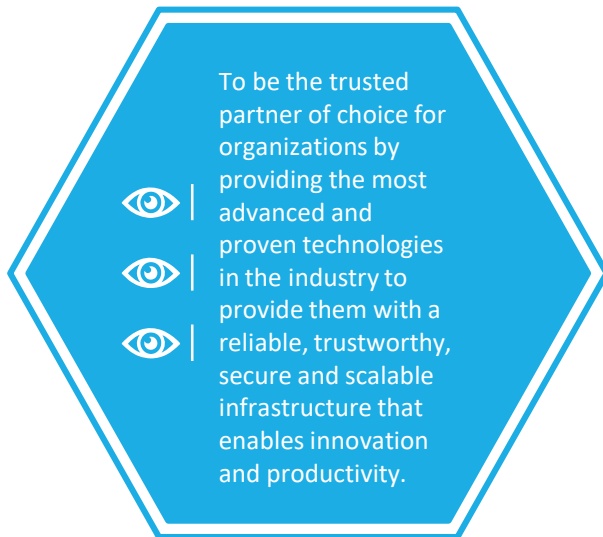






## MISSION & VISION

### MISSION



### VISION



SRM Construction aims to become one of the leading Infra Contractor in India and in the region.

Guided by our vision, we provide quality services exceeding client's expectations while adhering to the highest standards of Technical and Individual excellence through continuous improvement, training and innovation. Our guidelines are:

- ❖ Adding value to our clients
- ❖ Nurturing and Promoting our talents
- ❖ Dedication towards delivery on time
- ❖ Respecting our Employees' intense efforts and contribution
- ❖ Commitment towards Quality and Safety
- ❖ Company of Choice, Innovative, and Leaders in the Market
- ❖ Consistently delivering maximum returns and outstanding values by providing innovative



## RANGE OF SERVICE



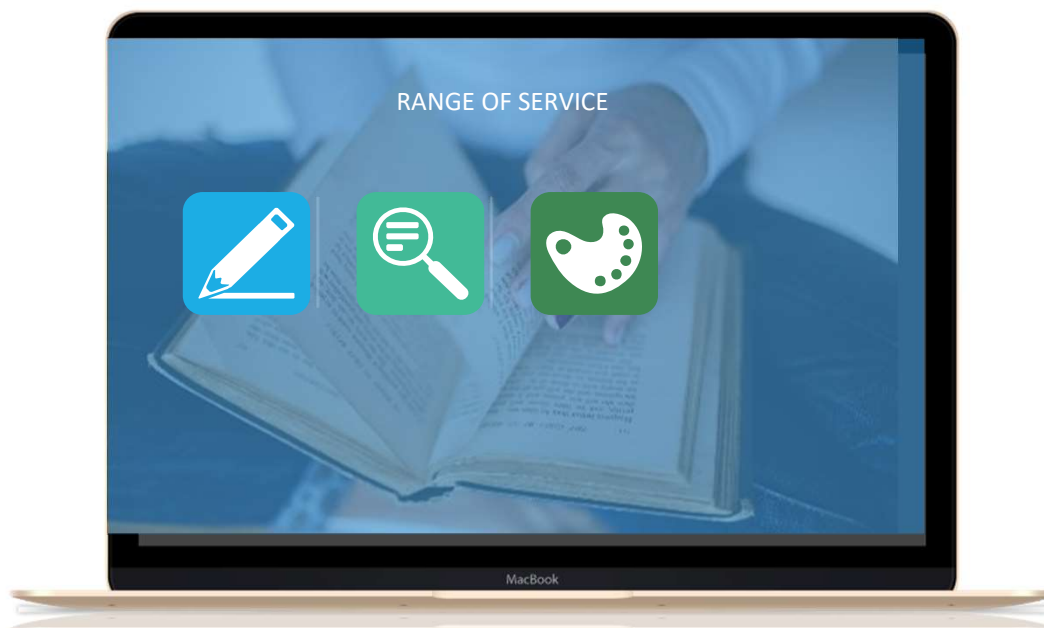
The developer of Projects & Investments.  
Ownership of the Assets



Engineering Procurement and Construction.  
Operation and Maintenance of the Facility



Maintaining the Assets for a longer period.  
Transfer of the Facility





**SRM CONSTRUCTION INCORPORATION CERTIFICATE  
REGISTRATION**



सत्यमेव जयते

**GOVERNMENT OF INDIA  
MINISTRY OF CORPORATE AFFAIRS**

Central Registration Centre

**Certificate of Incorporation**

[Pursuant to sub-section (2) of section 7 and sub-section (1) of section 8 of the Companies Act, 2013 (18 of 2013) and rule 18 of the Companies (Incorporation) Rules, 2014]

I hereby certify that SRM CONSTRUCTION AND CONTRACTING PRIVATE LIMITED is incorporated on this Third day of June Two thousand twenty-two under the Companies Act, 2013 (18 of 2013) and that the company is limited by shares.

The Corporate Identity Number of the company is U40300TN2022PTC152832.

The Permanent Account Number (PAN) of the company is **ABICS6771Q** \*

The Tax Deduction and Collection Account Number (TAN) of the company is **CHES66048D** \*

Given under my hand at Manesar this Third day of June Two thousand twenty-two .



Digital Signature Certificate

**ALOK TANDON**

Deputy Registrar Of Companies

For and on behalf of the Jurisdictional Registrar of Companies

Registrar of Companies

Central Registration Centre

Disclaimer: This certificate only evidences incorporation of the company on the basis of documents and declarations of the applicant(s). This certificate is neither a license nor permission to conduct business or solicit deposits or funds from public. Permission of sector regulator is necessary wherever required. Registration status and other details of the company can be verified on [www.mca.gov.in](http://www.mca.gov.in)

Mailing Address as per record available in Registrar of Companies office:

SRM CONSTRUCTION AND CONTRACTING PRIVATE LIMITED  
DRNO 5/84-A SOUTH KADU, NAVALUR ATTUR TALUK, SALEM,  
Salem, Tamil Nadu, India, 636116







SRM CONSTRUCTION ESIC REGISTRATION



**Sub-Regional Office**  
EMPLOYEES' STATE INSURANCE CORPORATION  
ESI Corporation, 39/57, Three Roads, Salem

C-11 Regd. with a.d.

To  
M/s.SRM CONSTRUCTION AND CONTRACTING PRIVATE LIMITED  
DRNO 5/84-A SOUTH KADU  
NAVALUR ATTUR TALUK  
SALEM,636116

Dated : 3/6/2022

**Subject:- Implementation of the E.S.I. Act, 1948 and Registration of Employees of the Factories and Establishments under Section 1(5) of the Act, as amended.**

Dear Sir(s),

1. It is informed that under section 1(3) of the esi. act, 1948 is applicable to all factories/establishments covered under the act within the area where your factory/establishment is situated
2. It is further informed that the appropriate government has extended the provisions of the act to other establishments under section 1(5) of the act in this area
3. Under section 2 a of the act such a factory/establishment is required to register itself under the act and chapter iv thereof casts a responsibility on the principal employer thereof to get his employees registered and pay contributions in respect of these employees covered under the act.
4. On the basis of the particulars in respect of your factory/establishment submitted by you, the report of the inspection conducted by the Social Security Officer, who inspected your establishment on -NA-, your establishment falls within the purview of Section 1(5) of the Act with effect from 03-06-2022. In case, however, subsequent facts reveal that your establishment was coverable from a date prior to the date mentioned above, you shall make yourself liable to comply with the provisions of the Act from such earlier date.
5. It is requested to take immediate steps for registration of your employees by submitting declaration forms online, payment of contribution, maintenance of records etc. from the date of coverage of your factory/establishment under the act. \*\*You are also requested to submit employer's registration form (form 01) as required under the provisions of sec.2-a of the esi act , 1948 read with regulation 10-b of the esi(general), regulations, 1950.
6. For the sake of convenience your establishment has been allotted code No **63001063650000906** which may kindly be used in all communications sent to this office and on all forms at the place indicated for the purpose. The Branch Office of the Corporation situated at **12/133, Gandhipuram,(Vinayagapuram),Attur - 636 102** has been instructed to render necessary assistance to you in connection with registration of your employees. In case you find any difficulty or for any other purpose which may be necessary in connection with the Scheme you are requested to contact the Manager of the above Branch Office who will render necessary help in the matter.
7. A State wise list of ESI Dispensaries is available on our website [www.esic.nic.in](http://www.esic.nic.in) under the link Directories which can be downloaded. It is requested that publicity may be given about the Employees' State Insurance Dispensaries to enable your employees to choose their E.S.I. Dispensaries





CERTIFICATION & ACCREDITATION OF SRM ESTABLISHMENT

SRM CONSTRUCTION GST REGISTRATION



Government of India  
Form GST REG-06  
[See Rule 10(1)]

Registration Certificate

Registration Number : 33ABICS6771Q1ZI

1.	Legal Name	SRM CONSTRUCTION AND CONTRACTING PRIVATE LIMITED			
2.	Trade Name, if any				
3.	Additional trade names, if any	null			
4.	Constitution of Business	Private Limited Company			
5.	Address of Principal Place of Business	DRNO 5/84-A SOUTH KADU, NAVALUR ATTUR TALUK, DRNO 5/84-A SOUTH KADU, Salem, Tamil Nadu, 636116			
6.	Date of Liability				
7.	Period of Validity	From	24/06/2022	To	Not Applicable
8.	Type of Registration	Regular			
9.	Particulars of Approving Authority	Signature valid Centre Digitally signed by DS GOODS AND SERVICES TAX NETWORK(4) Date: 2022.06.24 17:15:24 IST			
Signature					
Name		KRISHNAMURTHY VENKATRAMANASARMA			
Designation		Superintendent			
Jurisdictional Office		ERODE (RURAL)			
9. Date of issue of Certificate		24/06/2022			
Note: The registration certificate is required to be prominently displayed at all places of business in the State.					



CERTIFICATION & ACCREDITATION OF SRM ESTABLISHMENT

SRM CONSTRUCTION PF REGISTRATION

Q Establishment Search

Q List of Establishments

Total Records Found : 1

Excel

Search:

Establishment ID	Establishment Name	Address	Office Name	Action
CBSLM2676260000	SRM CONSTRUCTION AND CONTRACTING PRIVATE LIMITED	DRNO 5/84A SOUTH KADUNAVALLUR ATTUR TALUK	SALEM	View Details

Showing page 1 of 1

Previous

1

Next

Q Validity Status (As per Online Coverage) (View Payment Details)

[View Payment Details](#)

A.	Establishment Code	CBSLM2676260000
B.	Establishment Name	SRM CONSTRUCTION AND CONTRACTING PRIVATE LIMITED
C.	Establishment Status	CODE NO ALLOTTED WAS AFTER ONLINE REGISTRATION STARTED.
D.	Registration Status on ECR Portal	PERMANENT LOGIN CREATED BY OWNER ON ECR PORTAL
E.	Post Coverage Status	--

🔑 Establishment Status (As per EPFO Master)

A.	Exemption Status	PF: UNEXEMPTED, PENSION: UNEXEMPTED, EDLI: UNEXEMPTED
B.	Working Status	LIVE ESTABLISHMENT
C.	Coverage Section	0000001(4)
D.	Actionable Status	ACTIONABLE ESTABLISHMENT
E.	Date of Coverage	03-JUN-2022

🔑 Establishment Details (As per Form 5A submitted Online by the Employer)

Last updated on : 03-JUN-2022

Name of Establishment(As per PAN) :	SRM CONSTRUCTION AND CONTRACTING PRIVATE LIMITED	Establishment Code :	CBSLM2676260000
PAN Status :	VERIFIED		
Section Applicable :	VOLUNTARY COVERAGE	Primary Business Activity :	OTHERS
ESIC CODE :			



## AWARDS AND RECOGNITION



# Smart infratech Developers

COMMERCIAL | RESIDENTIAL | INDUSTRIAL | INFRASTRUCTURE

Date: 10.08.2022

**M/s. SRM Construction and Contracting Private Limited,**  
Navalur Post, Attur Taluk, Salem District,  
Tamil Nadu, India – 636 116

**Attention:** Managing Director

**Subject:** Your Services to our organization

Dear Sir,

We would like to thank you and your team for your excellent services to our organization. We are really impressed by the timely support that you have been providing us. This has been greatly helping us to complete our Projects on time and ultimately achieving customer satisfaction.

We are indeed pleased with the fact that you have kept quality standards high in supplying of Earth moving machineries and Construction Support to us. We are very hopeful that you will continue to do so.

We are truly delighted by the level of commitment and professionalism demonstrated by your team. Please accept our sincere gratitude in appreciation for these tireless efforts.

It has been a pleasure doing business with you. We look forward to a long-term business relationship with you.

Thank you again!

Your Faithfully,

For Smart Infratech Developers







## AWARDS AND RECOGNITION

### M/s. JANBAL CONSTRUCTIONS

13/2, Pari Street, Teachers Colony, Erode - 638 011. TN.

Kerala :Parangath Towers, 14/132, Kalmandapam, Palakad -678 001.

E-mail :janbalconstructions@gmail.com

Cell : 88702 85597

88702 86217

GSTTN : 33AAHFJ5385QIZO

GST KL : 32AAHFJ5385QIZQ

PAN : AAHFJ5385Q

Ref.: LA/2022/10

Date: 5<sup>th</sup> Dec 2022

To,

M/s. SRM Construction and Contracting Private Limited  
Salem District, Tamil Nadu, India - 636 116

Attention: Manager - SRM Earth Movers

Subject: Appreciation for your remarkable contribution to the Project

Dear Sir,

We are writing to thank you for the quality of service provided by your company. The services provided by your Earthmoving machines are up to our satisfaction. We sincerely appreciate your efficient, gracious customer service, the level of detail and accountability you have demonstrated on each project, and the way you conduct business as a whole.

Our team could be more satisfied with your work, and we look forward to continuing this relationship.

All the best,

For M/S JANBAL CONSTRUCTIONS

BALASUBRA  
MANIAM P N

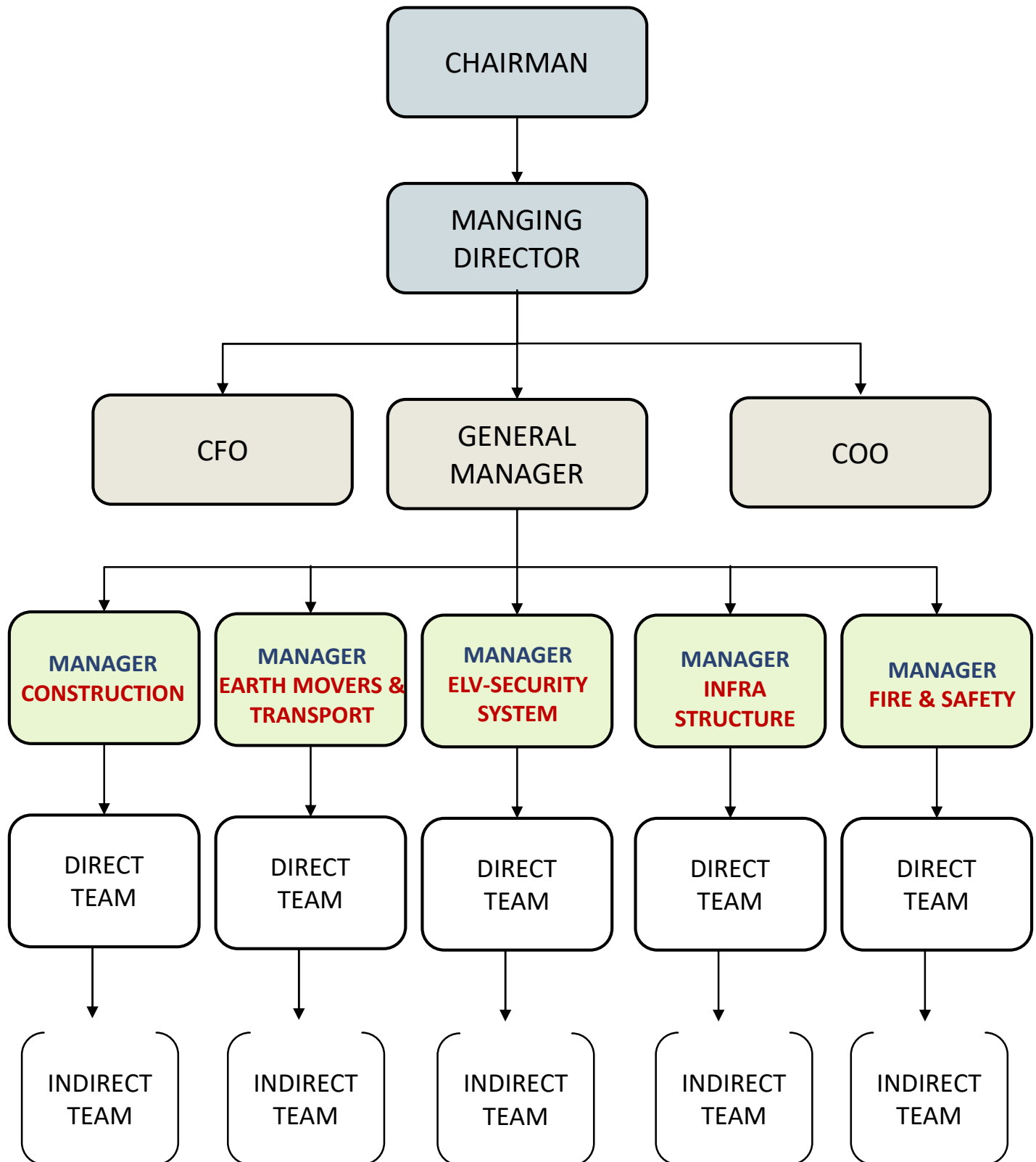
Digitally signed by  
BALASUBRAMANI  
AM P N

Partner





## ORGANIZATION CHART





## LIST OF MANGAMENT STAFF

### Direct Staff:

Description	Nos
Direct Staff:	
Project Manager	7
Construction Lead	4
Project Lead (Civil)	3
Project Lead (Engineering)	3
Project Lead (Earth Moving)	2
Project Lead (Telecommunication)	4
Project Lead (Fire & Safety)	2
Quantity Surveyor	1
Asst. Quantity Surveyor	1
Chief Surveyor	1
Planning Engineer	1
NOC Engineer	1
QA/QC Engineer	1
Asst. QA/QC Engineer	1
Draughtsman	3
Asst, Draughtsman	2
Safety Engineer	1
Safety Officer	3
Document Controller	1
Office Boy/Cleaner	4

### Indirect Staff:

Description	Nos
Indirect Field Staff:	
Surveyor	3
Asst. Surveyor	2
Site Supervisor	12
General Foreman	18
Foreman	10
Store Keeper/Plant	5
Watchman/Security	4
Chargehand	4
Technician/Splicer	4
Carpenter	15
Mason	15
Steel Fixer	15
Pipe Fitter	15
Operators	25
Drivers	14
Labour/Helper	120



# SRM CONSTRUCTION AND CONTRACTING PVT.LTD

## ENGINEERING | CONSTRUCTION | CONTRACTING

**Employee Name : Rajasekaran | DOB: 08/12/1981 |**  
**Designation : Project Manager (Civil-Construction)**  
**Address : Valli Nagar, Kalavasal- Madurai**

**KEY ROLE-RESUME**

**About me.** Industrious Civil Project Manager who efficiently manages various civil construction projects. Adept at ensuring compliance with local state and federal engineering and construction guidelines. Specialize in assessing project needs while adhering to cost-effective quality control standards.

---

### SKILLS:

- a) Project Management
- b) MS Office
- c) AutoCAD

### LANGUAGE:

- a) English
  - b) Tamil
  - c) Hindi
  - d) Malayalam
- 

### EDUCATION:

- a) Bachelor of Civil Engineering – Thiyagaraja Engineering College, Madurai, 2004
  - b) Diploma in Civil Engineering – Thangamuthu Polytechnic College, Batlagundu, 2001
- 

### PROFESSIONAL EXPERIENCE:

Company Name : SRM CONSTRUCTION AND CONTRACTING PVT.LTD-SALEM

Designation : Project Manager (Civil-Construction)-Still 2017

- Oversaw all civil construction projects and coordinated with other project managers.
- Clearly determined project requirements to determine necessary materials and staffing.
- Prepared project budgetary projections.
- Maintained project safety standards.

Company Name : SRI RAJA ENGINEERING CONTRACTOR PVT.LTD-CHENNAI

Designation : Asst Project Manager (Civil) (2008-2017)

- Prepared project proposals and resolved any client issues.
- Ensured that all proposals and contracts were signed and approved.
- Managed all aspects of each assigned civil project.
- Developed and implemented civil engineering principles and concepts.

Company Name : SURYA CONSTRUCTION-THEKKADI

Designation : Project Manager (Civil) (2004-2008)

- Maintained detailed work schedules and hired additional staff as necessary.
  - Assisted with the process of selecting project design teams.
  - Coordinated with various subcontractors.
  - Executed quality control practices.
- 

### CERTIFICATION:

- a) Project Management
- b) Budgeting & Cost Controlling
- c) Cost Management



# SRM CONSTRUCTION AND CONTRACTING PVT.LTD

## ENGINEERING | CONSTRUCTION | CONTRACTING

**Employee Name :** Harish Nair | **DOB:** 08/12/1987 |  
**Designation :** Project Manager (ELV)  
**Address :** Balamedu, Kannur-Kerala

### KEY ROLE-RESUME

**About me.** B.Tech in Electronics & Communication with 15 years of experience in Managing, Project Engineering, Project Coordination and Site Engineering in ELV systems field.

---

#### SKILLS:

- a) Project Management
- b) ACS & CCTV
- c) MDF & IDF Design

#### LANGUAGE:

- a) English
  - b) Tamil
  - c) Hindi
  - d) Malayalam
- 

#### EDUCATION:

- a) Bachelor of Electronics & Communication Engineering –Sri Ramakrishna Engineering College,Coimbatore, 2007
  - b) Diploma in ECC Engineering – Govt Polytechnique College, Kannur , 2003
- 

#### PROFESSIONAL EXPERIENCE:

Company Name : SRM CONSTRUCTION AND CONTRACTING PVT.LTD-SALEM

Designation : Project Manager (ELV-Security System)-Still 2015

Manage Medium to Large-Scale Design & Build ELV-ICT Projects.

- Direct all project phases – engineering (concept and detailed), procurement, installation and commissioning
- Track project against its schedule, budget and against phase gate review objectives, reporting status to management and customer on a regular basis, and executive staff on an as needed basis.
- Review the quality of the work completed with the project team on a regular basis to ensure that it meets the client's standards. Be a task master in completing the task on time for the client and with good interpersonal skill to handle the team.
- Ensure that the project deliverable are on time, within budget and at the required level of quality.
- Identify project scope changes and prepares job change notices for submittal to clients.
- Review and approve key project documents including P&IDs, Plot Plans, Operating Manuals, etc.

Company Name : G4 TECHNOLOGIIES - BANGALORE

Designation : Asst.Project Manager (ELV) (2007-2015)

- Generally responsible for implementations and monitoring of all Electrical and ELV related works at site.
  - Estimates prepares and assigns the resources such as manpower, materials, consumables, equipment and tools etc., required for all electrical and related works prior to execution
  - Plans and analyses all possible construction methodologies and recommends the best options to the Manager for approval prior to execution at site.
  - Coordinates with Client / Consultant's representatives for any site instructions and inspection of works. Assign targets for accomplishments and ensure targets are met on daily basis for all electrical groups at site.
- 

#### CERTIFICATION:

- a) CCNA
- b) Networking
- c) Cost Management





## LIST OF VEHICLES & MACHINERIES

S.No	Description	Make	Model	Qty	Year of Manufacturing	View
1	Backhoe loader	JCB - India	JCB 3DX	1	2020	
2	Backhoe loader	JCB - India	JCB 3DX	1	2020	
3	Backhoe loader	JCB - India	JCB 3DX	1	2017	
4	Hydraulic Excavator	KOMATSU	PC300 LC	1	2018	
5	Tractor	John Deere	5050 D	1	2021	
6	Rear-Tipping Trailer	Shivam Eng.	5T-RTT	1	2021	
7	Hydraulic Excavator	HYUNDAI	R210	1	2020	



SRM CONSTRUCTION AND CONTRACTING PVT.LTD  
ENGINEERING | CONSTRUCTION | CONTRACTING

## CLIENTELES



**Chennai Metro**

Chennai Metro Rail Limited



**TATA PROJECTS**



**LARSEN & TOUBRO**



**TATA ELECTRONICS**



## LIST OF PROJECTS REFERENCE

S.No	Description	Location	Project	Client
1	Earth Moving & Transport	Chennai	CMRL PH-II	Tata Projects
2	Earth Moving & Transport	Hosur	Infra Building	Tata Projects
3	Telecommunication	India	Fiber Communication	Railtel
4	Civil - Infrastructure	India	Retaining Wall	Tata Projects
5	Telecommunication	India	Fiber Communication	Tata Electronics
6	Civil - Construction	Hydrabad	Residential Building	Megha Engineering
7	Civil - Work	India	Civil - Earth Work	L&T
8	Earth Moving & Transport	Chennai	CMRL PH-II	Smart Infratech Developers
9	Civil - Water Management System	Ranipet	Ranipet-Pipeline	TWAD
10	Earth Moving & Transport	Taminadu	Infra Building	Tata Projects





**SRM CONSTRUCTION AND CONTRACTING PVT.LTD**  
ENGINEERING | CONSTRUCTION | CONTRACTING

## PROJECT PORTOFOLIO







**SRM CONSTRUCTION AND CONTRACTING PVT.LTD**  
ENGINEERING | CONSTRUCTION | CONTRACTING

## PROJECT PORTOFOLIO





## UNDER EXECUTION PROJECT

S.No	Description	Location	Project	Client
1	Earth Moving & Transport	Chennai	CMRL PH-II	Tata Projects
2	Civil - Ifrastructure	India	Retaining Wall	Tata Projects
3	Telecommunication	India	Fiber Communication	Tata Electronics
4	Civil - Construction	Hydrabad	Residential Building	Megha Engineering
5	Civil - Water Management System	Ranipet	Ranipet-Pipeline	TWAD
6	Earth Moving & Transport	Taminadu	Infra Building	Tata Projects



## DISASTER MANAGEMENT PLAN

SRM Construction and Contracting Private Limited is a fast growing & well-respected construction company involved in a full range of Engineering, Construction & Contracting activity like Industrial, Commercial, Residential & Infrastructural works by formulating concepts into reality and by highlighting long term objectives, safety, progress and cost effectiveness, to achieve continual improvements.

A disaster is a catastrophic situation in which suddenly, people are plunged into helplessness and suffering and, as a result, need protection, clothing, shelter, medical and social care and other necessities of life. The Disaster Management Plan is aimed to ensure safety of life, protection of Environment, protection of installation, restoration of production and salvage operations in this same order of priorities. For effective implementation of the Disaster Management Plan, it should be widely circulated and a personnel training is to be provided through rehearsals / drills. To tackle the consequences of a major emergency inside the plant or immediate vicinity of the plant, a Disaster Management Plan has to be formulated and this planned emergency document is called "Disaster Management Plan".

The objective of the Industrial Disaster Management Plan is to make use of the combined resources of the plant and the outside services to achieve the following:

- ❖ Effect the rescue and medical treatment of casualties;
- ❖ Safeguard other people;
- ❖ Minimize damage to property and the environment;
- ❖ Initially contain and ultimately bring the incident under control;
- ❖ Identify any dead;
- ❖ Provide for the needs of relatives;
- ❖ Provide authoritative information to the news media;
- ❖ Secure the safe rehabilitation of affected area;
- ❖ Preserve relevant records and equipment for the subsequent inquiry into the cause and circumstances of the emergency.



In effect, it is to optimize operational efficiency to rescue rehabilitation and render medical help and to restore normalcy.

Disaster Management Plan should include Emergency Preparedness Plan, Emergency Response Team, Emergency Communication, Emergency Responsibilities, Emergency Facilities, and Emergency Actions.





## RISK ASSESSMENT

### STAGE 1: IDENTIFY THE RISKS IN THE BUSINESS

Since the construction business is one in which maximum humans are involved at any given time, the first step is to identify the types of risks involved in a construction project. Make a survey of the equipment or processes involved in construction, which may cause injury or threaten the well-being of the workers.

### STAGE 2: DECIDE WHO ARE AT RISK

Next up decide who are those facing the potential risk. This can be done easily by someone who has attended a risk assessment workshop. Once the high-risk groups are identified, rate them according to the severity of injury or harm they are likely to face. Show how to handle each group in a tabular form.

### STAGE 3: FIX RESPONSIBILITY TO ENSURE IMPLEMENTATION

Though it is rather difficult to totally eliminate risks, it is possible to reduce them to a great extent after a risk assessment and by keeping people in charge who will be responsible for the training and safety of the workers. This will ensure that there are minimum chances of any accident or injury.

### STAGE 4: MAINTAIN A RECORD OF YOUR SAFETY MEASURES

Since it is mandatory to perform a risk assessment and ensure the safety of workers, need to keep a record of conducted training and risk assessment program. It can be produced whenever necessary to procure particular sanctions or licenses for the business in the future.

### STAGE 5: KEEP YOUR PROCEDURE UP-TO-DATE

There is a continuous change in the functioning of the construction business as well as the material and equipment used in the different related processes. It is, therefore, necessary to update the safety measures on site and provide updated training to all those directly involved. Keep your risk assessment plan updated and let everyone be aware of it.







## QUALITY POLICY

SRM/QMS/2022/DOC/05



### QUALITY POLICY

SRM Construction and Contracting Private Limited is a fast growing & well-respected construction company involved in a full range of Engineering, Construction & Contracting activity like Industrial, Commercial, Residential & Infrastructural works by formulating concepts into reality and by highlighting long term objectives, safety, progress and cost effectiveness, to achieve continual improvements.

It is the Company's policy to ensure that all projects are executed in accordance with contract specifications and drawings, within the contractual time frame, and in compliance with all legal requirements thus providing good value and satisfaction to our client. We do this by employing the best qualified employees and seeking out and using reputable, state of the art equipment's and products. This will produce a service that conforms to specified standards of quality, reliability and performance. It is our mission to:

- ✦ Carry out construction works in strict compliance with relevant measure, regulations and in accordance with relevant specifications and requirements.
- ✦ Provide and sustain effective utilization of resources.
- ✦ Provide a service that exceeds customer expectations Promotion of efficiency and cost effectiveness.
- ✦ Develop a challenging and rewarding work environment.
- ✦ Promote a culture of quality awareness and responsibility through leadership, communication and training, for direct working team members, suppliers and sub-contractors.
- ✦ Investing in personnel through education, training and development.
- ✦ Aim for zero snags.
- ✦ To fulfil social, moral, legal responsibility.

We recognize that this success depends on the experience and QUALITY of our team member and our associates and upon ongoing investment in their training and development and the constant upgrading of facilities. Quality objectives are set by the directors at management review. Such objectives are to be realistic and measured against company performance. The directors believe that all team members need to be aware of the company's commitment to the provision of a quality service to its clients.

Place: Chennai  
Date: 5<sup>th</sup> December 2022

Ramesh Sabapathi  
Chairman



## HEALTH & SAFETY POLICY



SRM/QHSE/2022/DOC/09

### **QUALITY, HEALTH, SAFETY AND ENVIRONMENT POLICY**

We, at SRM Construction and Contracting Private Limited is a largescale buildings, infrastructure and industrial business entity engaged in Engineering, Construction and Contracting, believe that our business success depends on our ability to continually improve the quality of services while protecting people and the environment. Hence, we are committed to meet the expectation of our customers and continuously strive to improve the effectiveness of our Quality, Health, Safety and Environment (QHSE) Management System. To achieve this goal, our impetus will be towards following:

- ✦ Provision of safe working environment, prevention of injury, ill health and planning for enhanced emergency preparedness.
- ✦ Minimizing adverse impact of our activities on the environment to prevent the pollution and to preserve natural resources.
- ✦ Clearly define responsibilities for achieving the QHSE objects and to ensure adequate resources are provided for imparting training and motivation.
- ✦ Optimal utilization of men, machine, finance and other resources.
- ✦ Devising planning systems for effective implementations.
- ✦ Strong organizational support through human resources development.
- ✦ Development of reliable vendors for higher degree of Quality Assurance.
- ✦ Complying with contractual requirements.
- ✦ Communicating openly with stakeholders and making them aware on the QHSE aspects.
- ✦ Compliance of applicable legal and other requirements.
- ✦ Review this policy periodically for its continuing suitability and make it available to all the employees and interested parties.

Place: Chennai

Date: 5<sup>th</sup> December 2022

Ramesh Sabapathi

Chairman



## SUPPLIER CODE OF CONDUCT

The Supplier Code of Conduct mentioned in this document is applicable to all 'Suppliers' who have a business relationship with and / or intend to have business relationship with SRM Construction and Contracting Private Limited or any of its subsidiaries, successors, executors, administrators, representatives and permitted assignees ("SRM") by means of providing any kinds of goods or services to SRM. "Supplier" here refers to suppliers/ service providers/ contractors/ traders / dealers/ agents/ consultants/ consortiums/ joint venture partners including their employees, agents and other representatives. This Code briefly provides the basic requirements that we expect our Suppliers to respect and adhere to when conducting business with SRM Construction and Contracting Private Limited.

### Health and Safety

All suppliers must have in place effective health and safety management systems, appropriate for the nature and scale of their business and the goods, works or services they provide, ensuring compliance with health and safety law generally, as well as standards and codes specific to their industry. Suppliers working on our sites must comply with our health and safety standards, and where applicable, we may audit such compliance and look to drive continuous improvement. We continue to prioritize the purchase of materials that are not harmful to health in manufacture, use or disposal.

### Human Rights

All our Suppliers shall adhere to all applicable local, state and national Labour Laws and Human Rights Laws. We expect all businesses in our supply chain to respect their people and to offer a safe workplace that is free from harm, intimidation, harassment or fear. We are committed to promoting equal opportunities to all our employees, customers and suppliers. We expect our supply chain to treat all people equally, with respect and dignity. We do not discriminate nor do we tolerate discrimination on the grounds of age, colour, disability, ethnicity, gender, religion, faith or on any other unjustifiable or illegal grounds.







## **SUPPLIER CODE OF CONDUCT**

### **Environment**

We recognize that a significant change in business practice is needed to procure and use resources sustainably, mitigate and adapt to climate change, prevent pollution and protect and enhance biodiversity.

We encourage our Suppliers to offer solutions that improve the resilience of our operations, whilst also understanding how their own business needs to adapt to a changing climate. Suppliers whose work impacts our energy consumption are expected to offer solutions that reduce energy consumption and offer best whole life cost.

We continue to develop, and look to incentivize and drive, whole life cost performance and benefits through our suppliers.

### **Community**

We expect Suppliers to have an understanding of how their activities impact their local area and wider community.

We encourage them to make positive contributions and investments including local employment opportunities, workforce volunteering, and charitable activities as well as minimizing disruption to communities.

### **Business ethics and governance**

All our Suppliers are required to comply with applicable legal and regulatory requirements. All our Suppliers shall never offer or accept any undue payment or other consideration, directly or indirectly, for the purpose of inducing any person or entity to act contrary to their prescribed duties.

The Supplier shall not, directly or through intermediaries, take any recourse to any unethical behavior (implicit or explicit), or offer or promise any personal or improper advantage in order to obtain or retain a business or other advantage from a third party, whether public or private, including with any employee of SRM Construction and Contracting Private Limited.

### **Intellectual Property**

Suppliers to safeguard the intellectual and other property rights of SRM Construction and Contracting Private Limited and of third parties, including all patents, trademarks and copyrights.

To implement and maintain physical, organizational and technical measures to ensure the security and confidentiality of Data in order to prevent accidental, unauthorized or unlawful destruction, alteration, modification or loss of Data, misuse of Data, or unlawful processing of Data.

Not to transfer confidential information to any third party without the express, written permission of SRM Construction and Contracting Private Limited. 14



**SRM CONSTRUCTION AND CONTRACTING PVT.LTD**  
ENGINEERING | CONSTRUCTION | CONTRACTING

## Our Presentences

**SRM CONSTRUCTION AND CONTRACTING PVT LTD**  
ENGINEERING | CONSTRUCTION | CONTRACTING



**HEAD OFFICE**

5/84-A South, Navalur Post, Attur  
Taluk, Salem District, Tamil Nadu,  
India – 636 116

+91 4282 237135

info@srmcnc.com

**HEAD OFFICE**







**SRM CONSTRUCTION AND CONTRACTING PVT.LTD**  
ENGINEERING | CONSTRUCTION | CONTRACTING



**THANK YOU**  
For Your Attention